

EAGLEWOOD, P.U.D.

BEING A PART OF SECTIONS 27 & 28, TOWNSHIP 39 SOUTH,
 RANGE 42 EAST, MARTIN COUNTY, FLORIDA

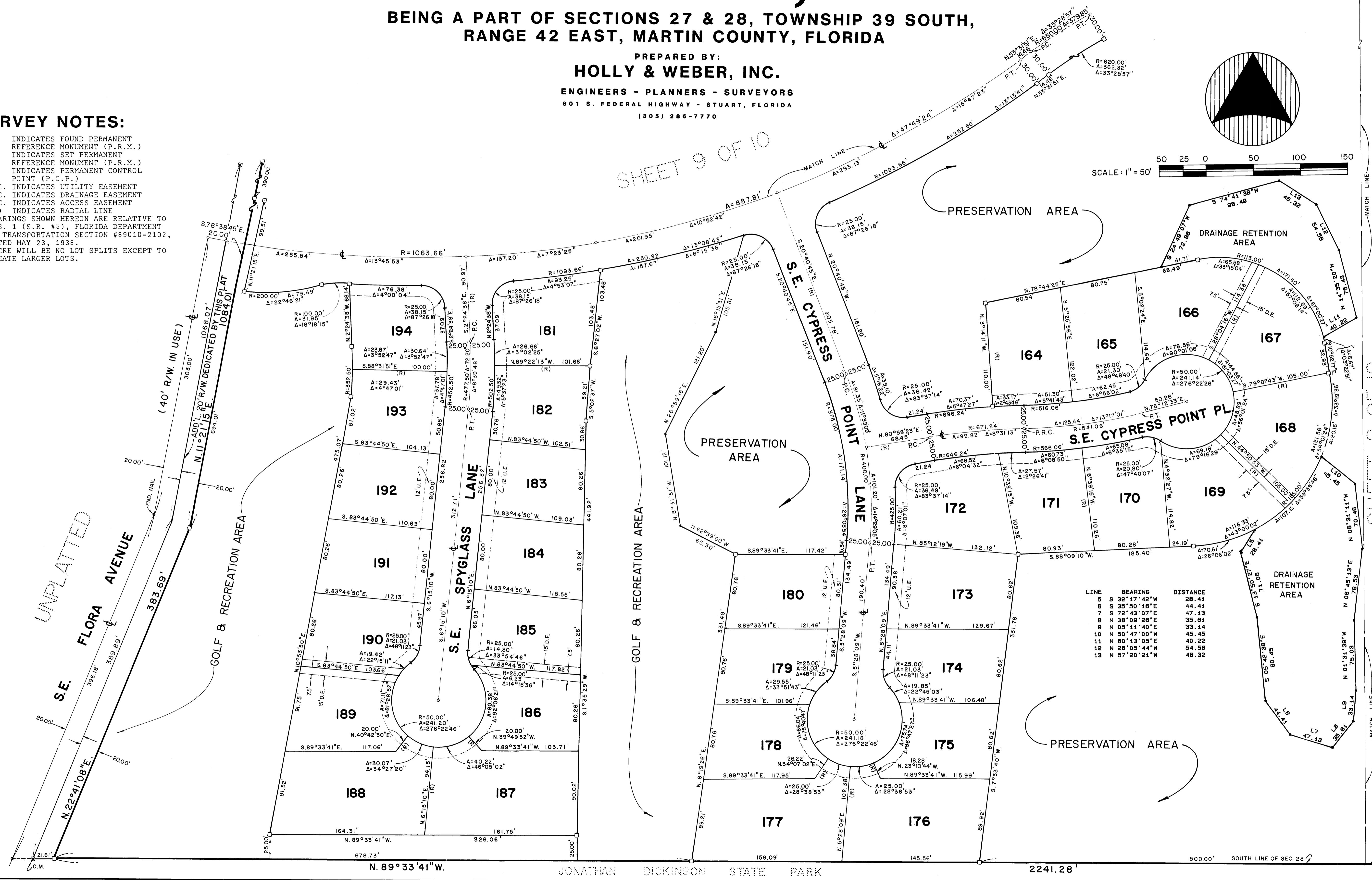
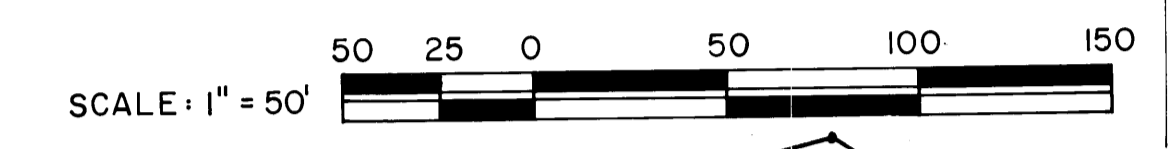
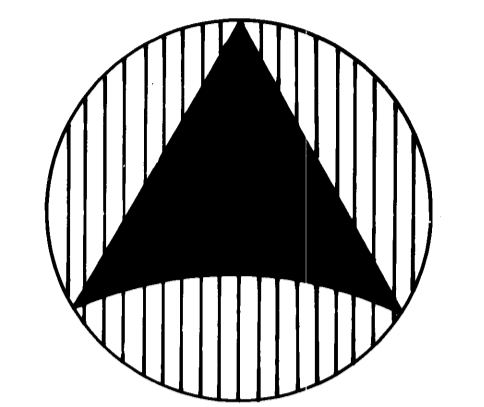
PREPARED BY:
HOLLY & WEBER, INC.
 ENGINEERS - PLANNERS - SURVEYORS
 601 S. FEDERAL HIGHWAY - STUART, FLORIDA
 (305) 286-7770

PLB 9
 PG 26

SURVEY NOTES:

- INDICATES FOUND PERMANENT REFERENCE MONUMENT (P.R.M.)
- INDICATES SET PERMANENT REFERENCE MONUMENT (P.R.M.)
- INDICATES PERMANENT CONTROL POINT (P.C.P.)
- U.E. INDICATES UTILITY EASEMENT
- D.E. INDICATES DRAINAGE EASEMENT
- A.E. INDICATES ACCESS EASEMENT
- (R) INDICATES RADIAL LINE
- BEARINGS SHOWN HEREON ARE RELATIVE TO U.S. 1 (S.R. #5), FLORIDA DEPARTMENT OF TRANSPORTATION SECTION #89010-2102, DATED MAY 23, 1938.
- THERE WILL BE NO LOT SPLITS EXCEPT TO CREATE LARGER LOTS.

SHEET 9 OF 10



LINE	BEARING	DISTANCE
5	S 32°17'42"W	28.41
6	S 35°50'18"E	44.41
7	S 72°43'07"E	47.13
8	N 38°09'28"E	35.81
9	N 05°11'40"E	33.14
10	N 50°47'00"W	45.45
11	N 80°13'05"E	40.22
12	N 28°05'44"W	54.58
13	N 57°20'21"W	46.32

UNPLATED

SHEET 8 OF 10

N. 89°33'41"W. JONATHAN DICKINSON STATE PARK 2241.28' 500.00' SOUTH LINE OF SEC. 28

28
 P.O.B.
 S.E. COR. SEC. 28, TWP. 39 S., RGE. 42 E.
 5°5'30" N
 33